



MindManager® information maps provide an intuitive visual framework that fosters clarity, innovative thinking and communication to improve business results.

#### How it works:

You create maps in MindManager by starting with a central theme or goal. Then provide more detail by adding subtopics with notes, images, tasks, hyperlinks and attachments containing related ideas and information.



THINK IT. SEE IT. SHARE IT.

Mindjet

# MindManager®

Version 9 for Windows®

#### Accomplish More, Faster

- Clearly align and organize your ideas, information and strategies in ways that increase your productivity.
- See the big picture and all the relevant details, uncover hidden connections and reveal new opportunities.

#### Ensure Project Success

- Achieve active participation in project planning and goal setting to fully engage the project team.
- Create more realistic plans and schedules by mapping out your tasks, optimizing resource assignments and defining dependencies and timelines.

#### Communicate More Effectively

- Organize and present everything in a visual context to ensure clear understanding and dramatically improve retention.
- Share your ideas, plans, vision and research by publishing maps in the most widely used formats.

## TOP FEATURES

#### Industry-Leading Information Visualizations

Easily lay out, organize and work with ideas and information in a wide variety of interactive visual formats, including information maps, outlines, Gantt charts, organization charts, tree diagrams and a special brainstorming mode.

#### Project & Task Management

Quickly brainstorm tasks, automatically calculate summary tasks and optimize resource utilization. View MindManager, Outlook® and SharePoint® tasks\* in the synchronized Gantt view or export tasks to Microsoft Project®.

\*Mindjet MindManager Explorer for SharePoint sold separately.

## TOP FEATURES (CONTINUED)

### Information Map Presentations

Showcase your ideas and increase engagement using MindManager's automated presentation view or customizable slide shows. With MindManager's dynamic presentations, you'll easily tailor the level of details presented for each audience and capture critical feedback right in the presentation.

### Integration & Sharing

Save time with powerful integrations. Import from Microsoft Word and Project. Export to Word®, Project, or PowerPoint®. Display dynamic Outlook or Excel® content. Export web pages, images, PDF files and more. Or, share hosted interactive map files with anyone on the web even if they do not have MindManager.

### Capture Content & Add Context

Easily add hyperlinks, attachments, notes, images and spreadsheets to provide additional levels of details. Quickly drag and drop content to reorganize it and provide structure. Use icons, tags, topic shapes, callouts, boundaries, colors, topic sorting and numbering to provide additional context.

## SYSTEM REQUIREMENTS

### Supported Operating Systems:

- Microsoft® Windows® 7 32-bit and 64-bit\*
- Microsoft® Windows Vista® 32-bit
- Microsoft® Windows XP® SP3 32-bit
- Microsoft® Windows Server® 2003 32-bit
- Microsoft® Windows Server® 2008 32-bit and 64-bit
- Microsoft® Systems Management Server Using Windows Server® 2003 32-bit
- Citrix® MetaFrame Presentation Server 4.5

### System Requirements:

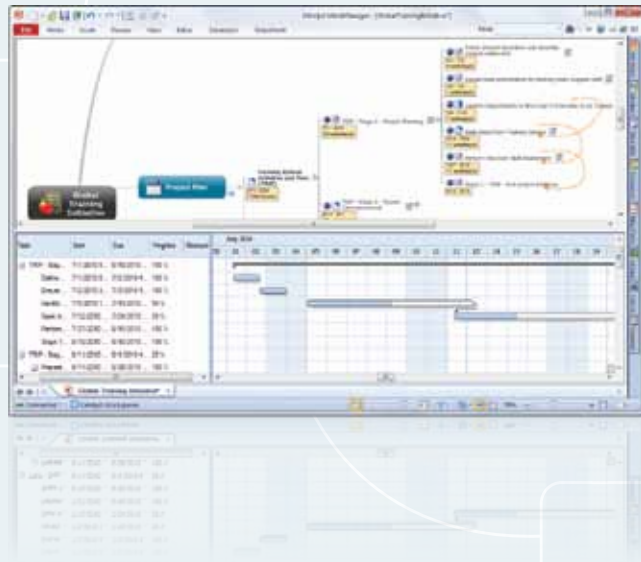
- IBM® or compatible Pentium® Processor (1 GHz or greater)
- 1 GB RAM or greater
- 200 MB disk space & 100 MB more during installation
- SVGA (1024 x 768/16-bit color or greater)
- Microsoft® .NET 3.5 or higher

### Dynamic Content

See everything in context with dynamic Microsoft Outlook dashboards to display and update relevant emails, tasks, contacts, notes and appointments. Populate branches with desktop or network folders and files for easy access. Or, perform Google or Bing web searches with results appearing directly in your map.

### Navigation & Viewing Controls

Easily navigate and control the levels of details displayed with powerful features like topic focus, show or hide branch, collapse map, quick and power filters and more. Automatically fit or balance your map within the screen or use the mini-map view to navigate large maps.



### Additional Requirements for Certain Features:

- Microsoft Office® Professional 2003, 2007, or 2010
- Microsoft Project® 2003, 2007, or 2010
- Microsoft® Internet Explorer® 7.0 or greater
- Mozilla® Firefox® 3.0 or greater
- Google® Chrome 4.0 or greater
- Adobe® Acrobat® 9.0 or greater
- Adobe Flash® Player 9 or greater
- Internet connection

\*Microsoft Office® 32-bit version recommended.

### Mindjet GmbH

European Headquarters  
Siemensstrasse 30

63755 Alzenau, Germany  
www.mindjet.com

### Mindjet (UK) Ltd.

1000 Great West Road  
Brentford

TW8 9HH, United Kingdom  
www.mindjet.co.uk

© 2010 Mindjet